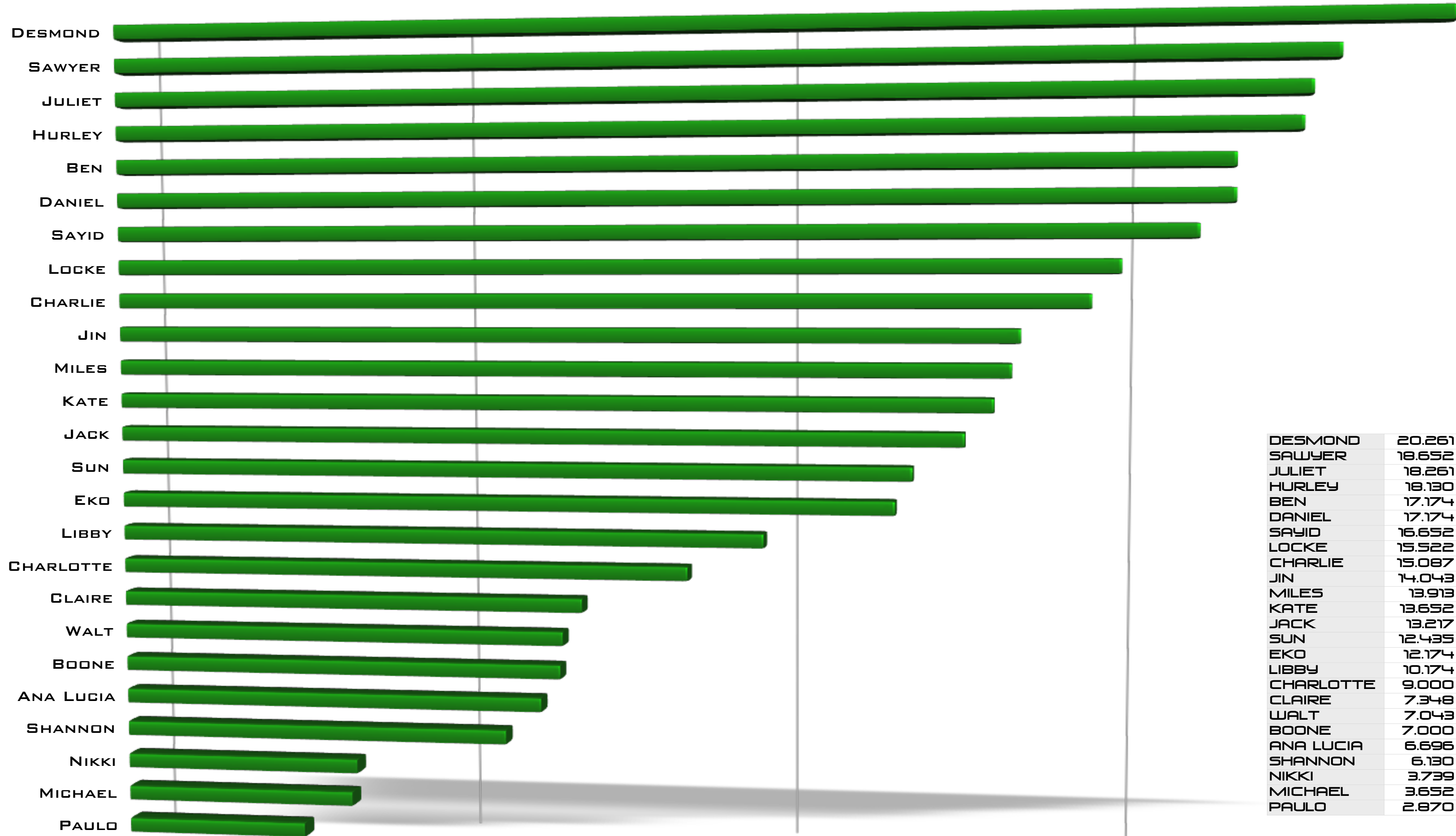


THE SEASON 5 LOST CHARACTER RANKING REPORT

RESPONDENTS: ANDREA, ANDY, ALD, BORIS, DEREK, DOUG, DUSTIN, GREG, JACQUI, JOSH, JUSTIN,
KATE, KENDRA, LINDSEY, MARC, MARIAN, MATT, MIKE, MIRKIN, PONY, ROB, SAM, TELLER

FEBRUARY 2010

HIGHEST OVERALL RANKED CHARACTERS

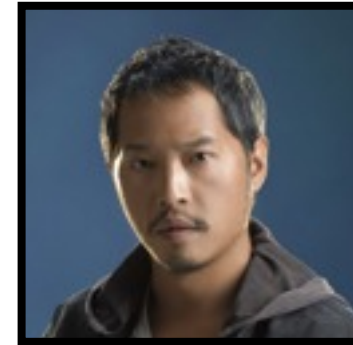
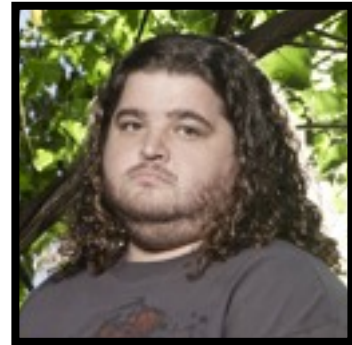


DESMOND	20.261
SAWYER	18.652
JULIET	18.261
HURLEY	18.130
BEN	17.174
DANIEL	17.174
SAYID	16.652
LOCKE	15.522
CHARLIE	15.087
JIN	14.043
MILES	13.913
KATE	13.652
JACK	13.217
SUN	12.435
EKO	12.174
LIBBY	10.174
CHARLOTTE	9.000
CLAIRE	7.348
WALT	7.043
BOONE	7.000
ANA LUCIA	6.696
SHANNON	6.130
NIKKI	3.739
MICHAEL	3.652
PAULO	2.870

TIER 1 CHARACTERS



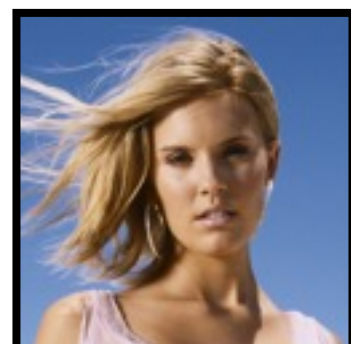
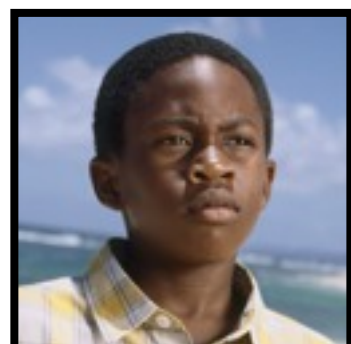
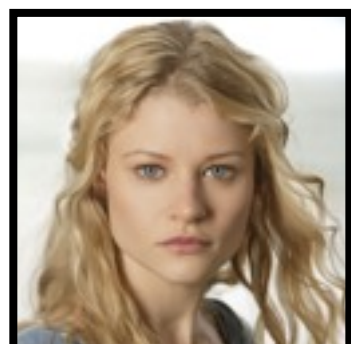
TIER 2 CHARACTERS



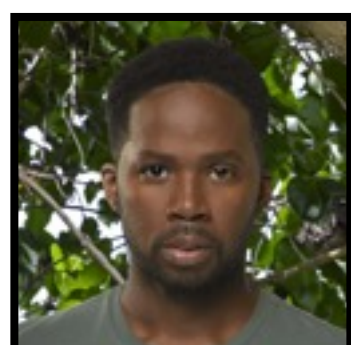
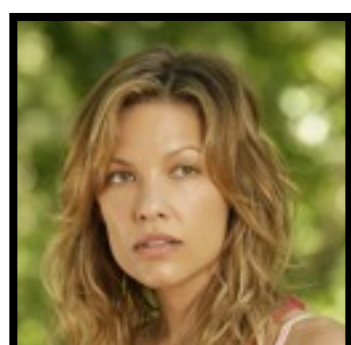
TIER 3 CHARACTERS



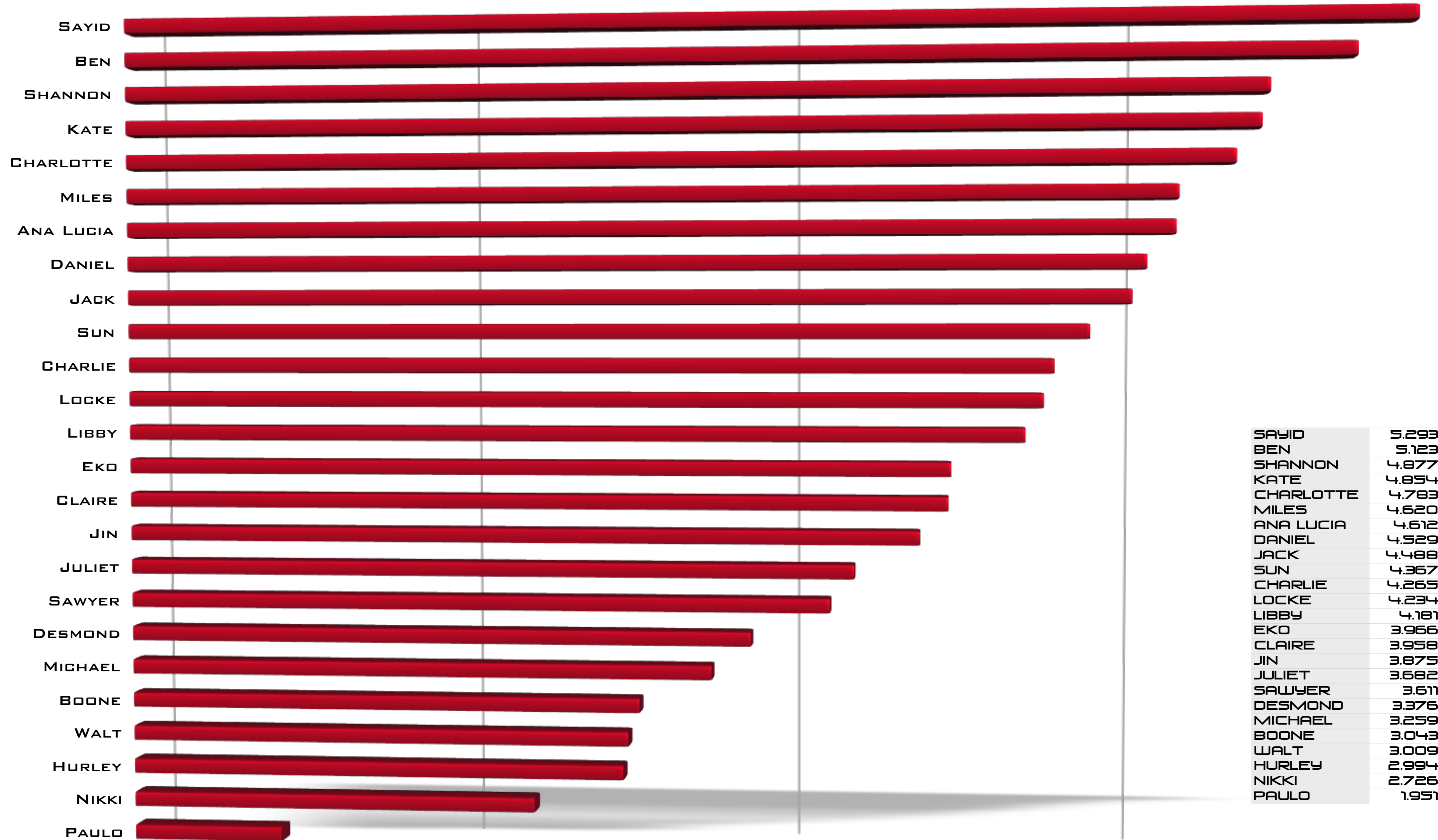
TIER 4 CHARACTERS



TIER 5 CHARACTERS



MOST CONTROVERSIAL CHARACTERS



SAYID	5.293
BEN	5.123
SHANNON	4.877
KATE	4.854
CHARLOTTE	4.783
MILES	4.620
ANA LUCIA	4.612
DANIEL	4.529
JACK	4.488
SUN	4.367
CHARLIE	4.265
LOCKE	4.234
LIBBY	4.181
EKO	3.966
CLAIRE	3.958
JIN	3.875
JULIET	3.682
SAWYER	3.611
DESMOND	3.376
MICHAEL	3.259
BOONE	3.043
WALT	3.009
HURLEY	2.994
NIKKI	2.726
PAULO	1.951

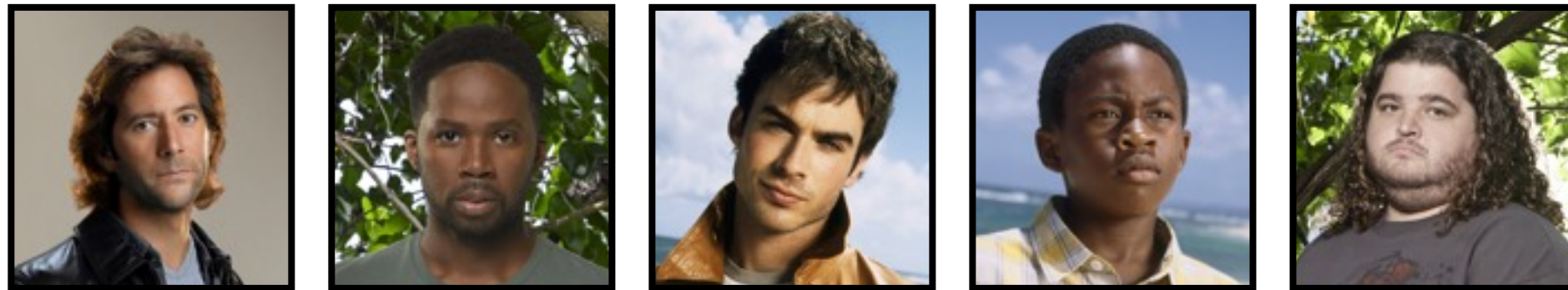
TIER 1 CONTROVERSY



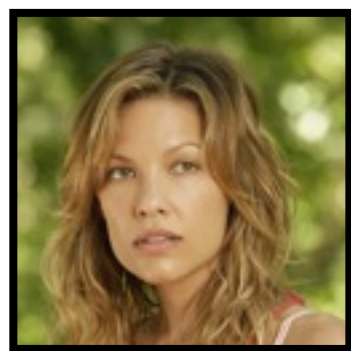
TIER 2 CONTROVERSY



TIER 3 CONTROVERSY



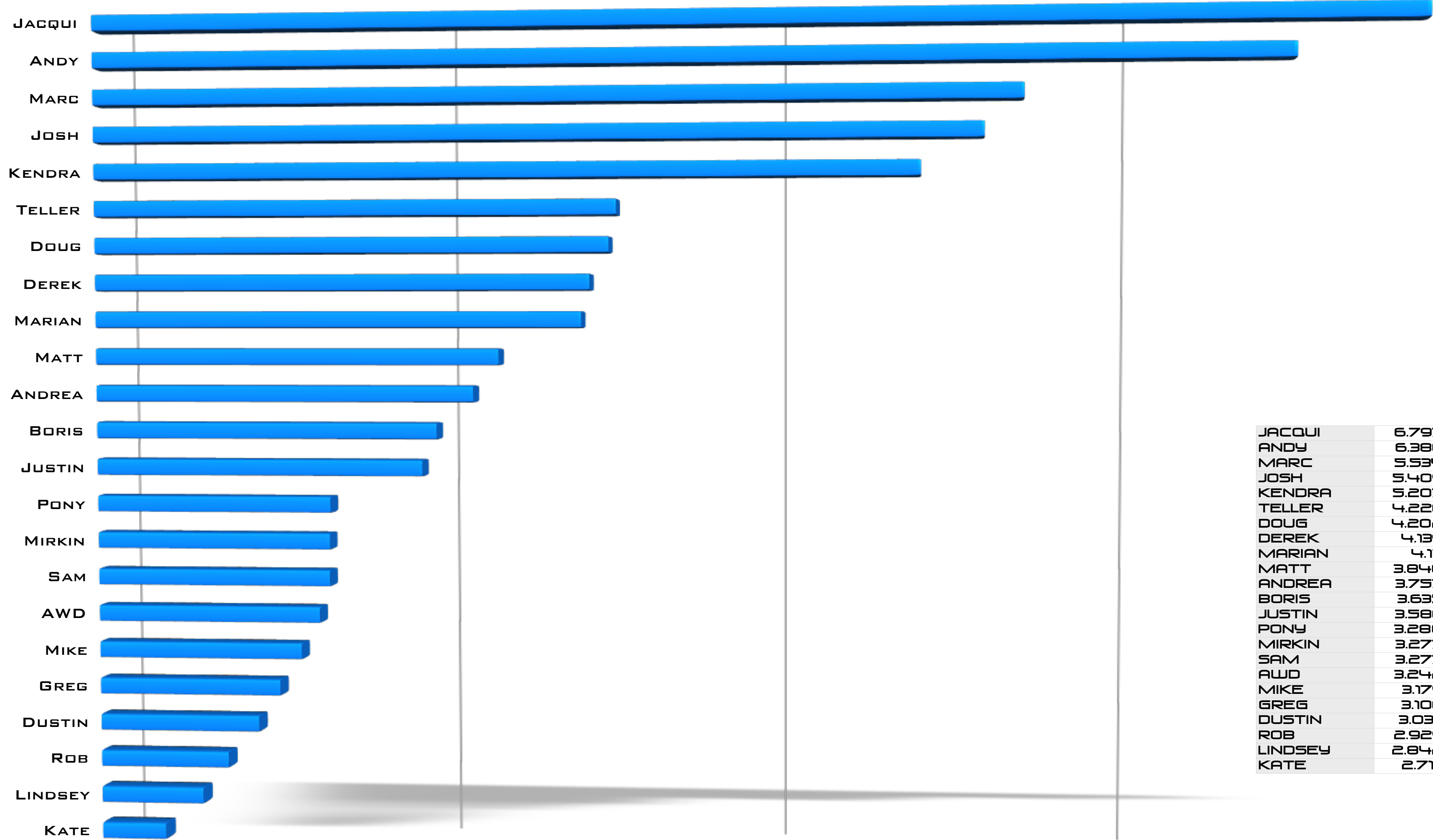
TIER 4 CONTROVERSY



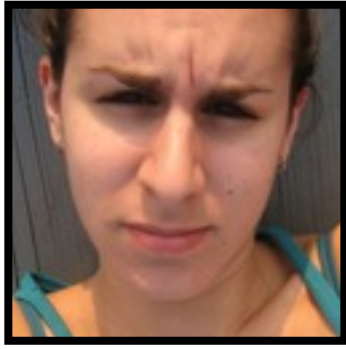
TIER 5 CONTROVERSY



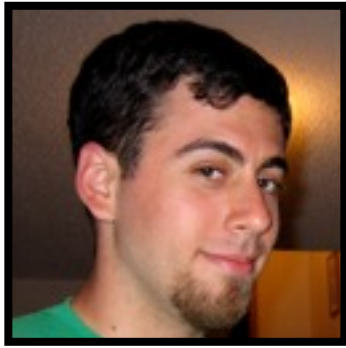
MOST DEVIANT RESPONDENTS



TIER 1 DEVIANCE



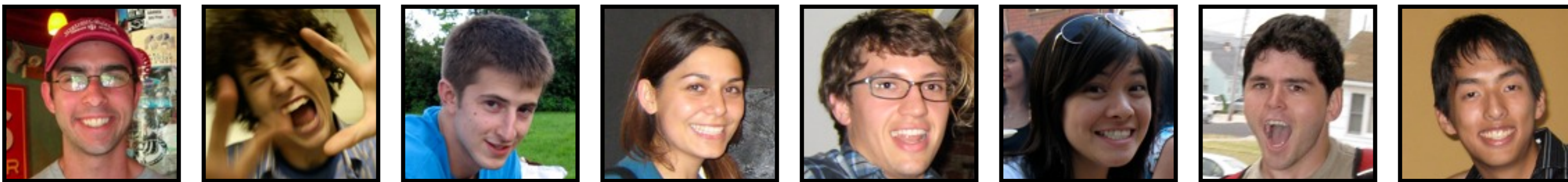
TIER 2 DEVIANCE



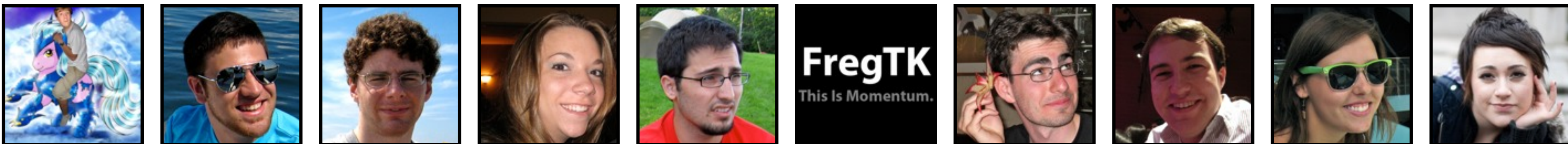
TIER 3 DEVIANCE



TIER 4 DEVIANCE



TIER 5 DEVIANCE



TOP 5 LEAST DEVIANT RANKINGS

DIFF.	CHARACTER	RESPONDENT
0.000	BOONE 	AWD, ANDREA, DEREK, DUSTIN, GREG, JACQUI, LINDSEY
0.043	WALT 	JOSH, MATT, MIRKIN, SAM
0.043	JIN 	KATE, KENDRA
0.130	PAULO 	JOSH, AWD, KENDRA
0.130	SHANNON 	AWD, DEREK
0.130	HURLEY 	ROB
0.173	EKO 	ANDREA, JOSH, PONY
0.173	DANIEL 	MIKE
0.217	JACK 	GREG, MIKE, SAM

TOP 5 MOST DEVIANT RANKINGS

DIFF.	CHARACTER	RESPONDENT
19.261	NIKKI 	JACQUI
16.870	SHANNON 	JOSH, KENDRA
16.261	DESMOND 	MARC
14.652	SAYID 	JOSH, ANDY
14.522	LOCKE 	JOSH

8

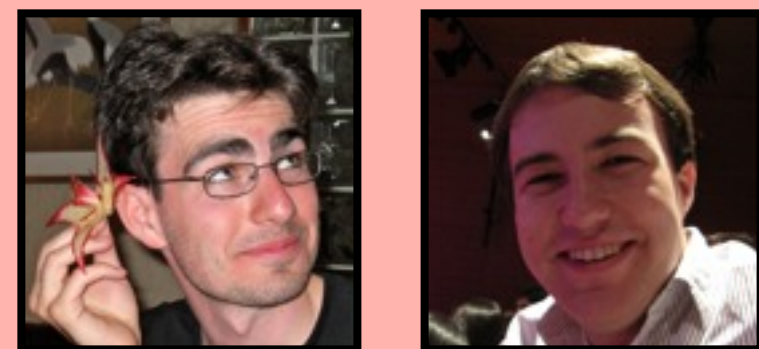
NUMBER OF TIMES MICHAEL WAS RANKED 25TH

17

NUMBER OF DIFFERENT RANKS LIBBY WAS PLACED INTO

6

NUMBER OF TIMES KATE WAS RANKED #13 (COMPLETELY IN THE MIDDLE)



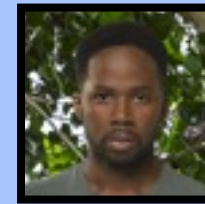
MOST SIMILAR RESPONDENTS

RANDOM FACTS



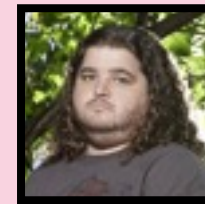
DESMOND

MOST #1 RANKS - 6



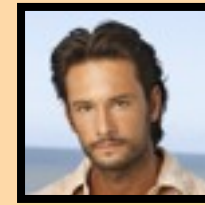
MICHAEL

MOST #25 RANKS - 8



HURLEY

HIGHEST LOW RANK - #12



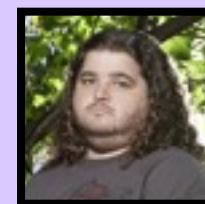
PAULO

LOWEST HIGH RANK - #13



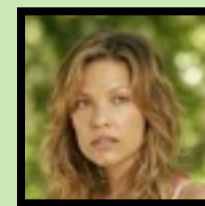
KATE

WIDEST SPREAD - #1 TO #25



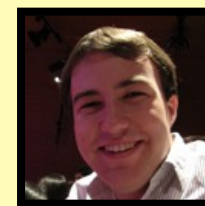
HURLEY

NARROWEST SPREAD - #1 TO #12



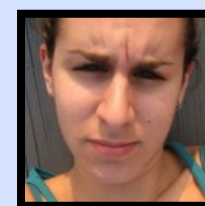
NIKKI

MOST FREQ. OCCURRING RANK - #24



ROB

APPEARS IN MOST SIMILAR LISTS



JACQUI

APPEARS IN MOST DISSIMILAR LISTS

0

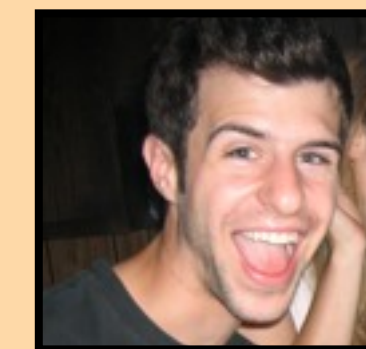
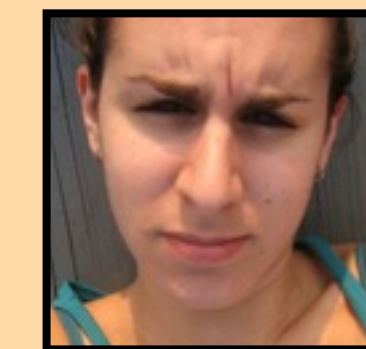
NUMBER OF TIMES HURLEY WAS RANKED BELOW PAULO

18

BOONE'S AVERAGE RANK, MODE, & MEDIAN

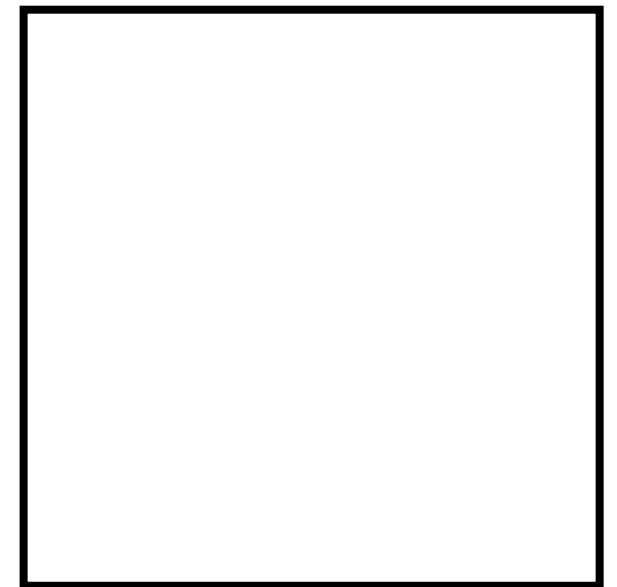
3.1

DIFFERENCE BETWEEN SHANNON'S MEDIAN & AVERAGE RANK



MOST DISSIMILAR RESPONDENTS

SAMPLE



RANKING

- SAWYER
- CHARLOTTE
- EKO
- SAYID
- MILES
- LOCKE
- MICHAEL
- BEN
- JACK
- HURLEY
- BOONE
- SUN
- ANA LUCIA
- NIKKI
- DANIEL
- WALT
- KATE
- DESMOND
- SHANNON
- JULIET
- CHARLIE
- PAULO
- JIN
- LIBBY
- CLAIRE

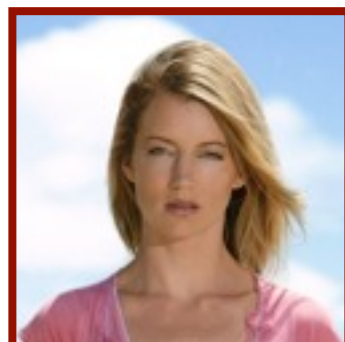
EXTREME



THE RESPONDENT'S COMPLETE RANKING

THE CHARACTER(S) THE RESPONDENT HAS RANKED HIGHEST OR TIED FOR HIGHEST AMONG ALL RESPONDENTS

THE CHARACTER(S) THE RESPONDENT HAS RANKED LOWEST OR TIED FOR LOWEST AMONG ALL RESPONDENTS



18TH

MOST DEVIANT OVERALL

7

NUM. OF EXTREME RANKINGS

THE RESPONDENT'S ORDERED RANK IN TERMS OF DEVIANCE

COMBINED TOTAL OF HIGHEST AND LOWEST EXTREME RANKINGS

ABSOLUTE DIFFERENCE BETWEEN AVERAGE RANK AND RESPONDENT'S RANK

JACK

0.000 AWAY

CHARACTER RANKED CLOSEST TO AVERAGE

JULIET

7.225 ABOVE AVERAGE

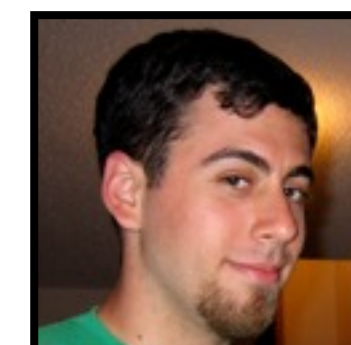
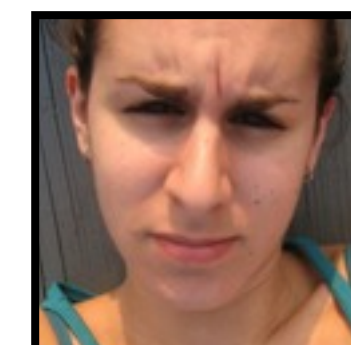
CHARACTER RANKED FARTHEST FROM AVERAGE

MOST SIMILAR TO:

THE THREE OTHER RESPONDENTS THAT THE RESPONDENT IS MOST (DIS)SIMILAR TO



MOST DISSIMILAR TO:



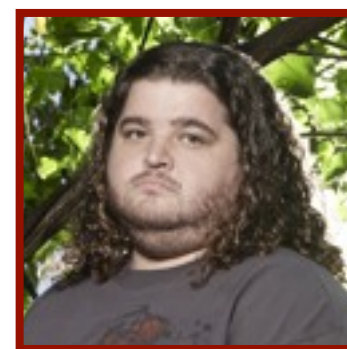
ANDREA



RANKING

- CHARLIE
- SAYID
- JULIET
- JACK
- KATE
- DESMOND
- LOCKE
- SAWYER
- DANIEL
- MILES
- ANA LUCIA
- HURLEY
- EKO
- SUN
- WALT
- BEN
- LIBBY
- BOONE
- JIN
- CLAIRE
- CHARLOTTE
- MICHAEL
- PAULO
- NIKKI
- SHANNON

EXTREME



11TH

MOST DEVIANT OVERALL

6

NUM. OF EXTREME RANKINGS

BOONE

0.000 AWAY

CHARACTER RANKED CLOSEST TO AVERAGE

CHARLIE

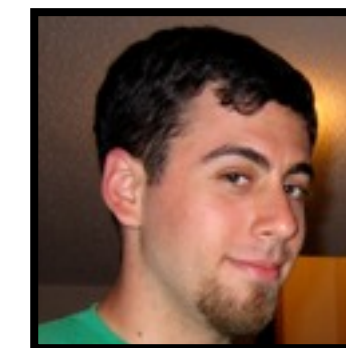
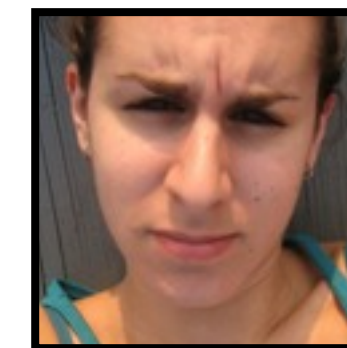
8.913 ABOVE AVERAGE

CHARACTER RANKED FARTHEST FROM AVERAGE

MOST SIMILAR TO:



MOST DISSIMILAR TO:



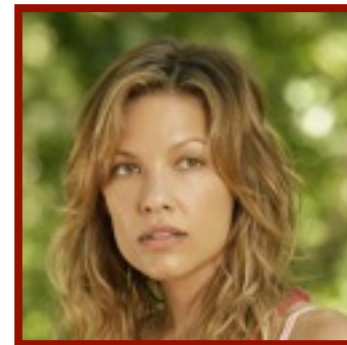
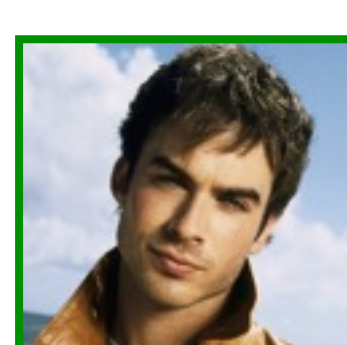
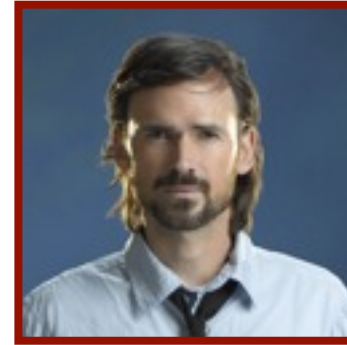
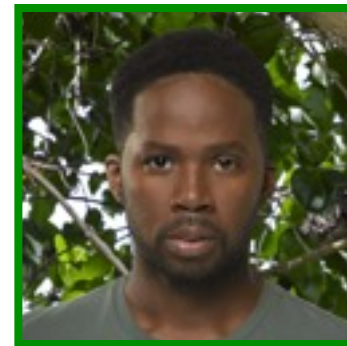
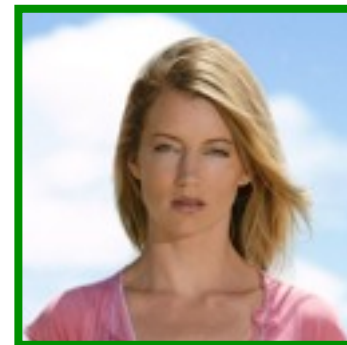
ANDY



RANKING

- LOCKE
- DESMOND
- LIBBY
- HURLEY
- MILES
- WALT
- CHARLOTTE
- EKO
- CHARLIE
- MICHAEL
- BOONE
- SAWYER
- JULIET
- JACK
- JIN
- CLAIRE
- DANIEL
- BEN
- SUN
- KATE
- PAULO
- ANA LUCIA
- SAYID
- NIKKI
- SHANNON

EXTREME



2ND

MOST DEVIANT OVERALL

10

NUM. OF EXTREME RANKINGS

CHARLIE

0.913 AWAY

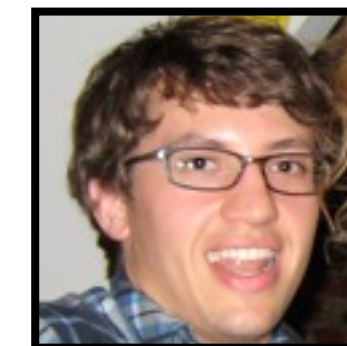
CHARACTER RANKED CLOSEST TO AVERAGE

SAYID

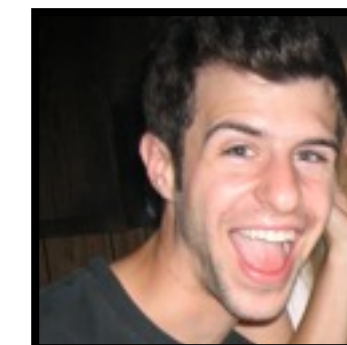
14.652 BELOW AVERAGE

CHARACTER RANKED FARTHEST FROM AVERAGE

MOST SIMILAR TO:



MOST DISSIMILAR TO:



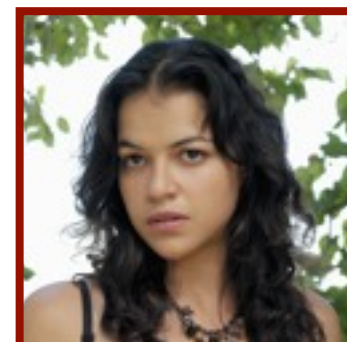
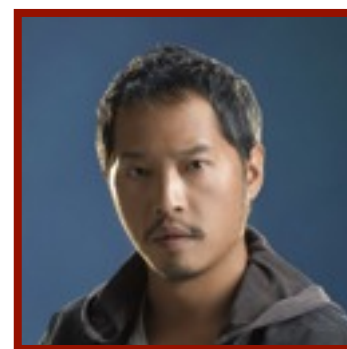
AWD



RANKING

- DESMOND
- DANIEL
- HURLEY
- CHARLIE
- JULIET
- SAWYER
- JACK
- KATE
- SAYID
- SUN
- BEN
- JIN
- CLAIRE
- CHARLOTTE
- LOCKE
- LIBBY
- EKO
- BOONE
- SHANNON
- MICHAEL
- NIKKI
- PAULO
- MILES
- WALT
- ANA LUCIA

EXTREME



17TH

MOST DEVIANT OVERALL

4

NUM. OF EXTREME RANKINGS

BOONE

0.000 AWAY

CHARACTER RANKED CLOSEST TO AVERAGE

MILES

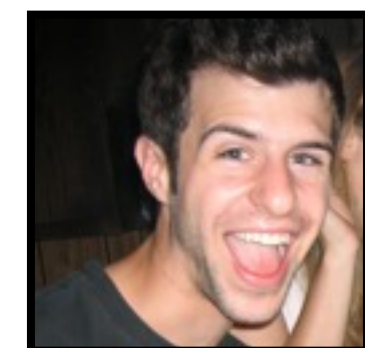
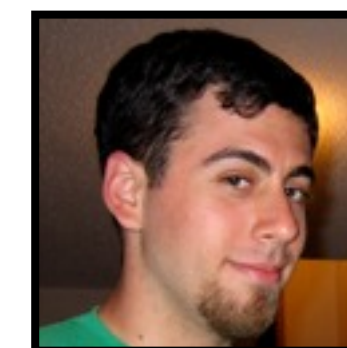
11.913 BELOW AVERAGE

CHARACTER RANKED FARTHEST FROM AVERAGE

MOST SIMILAR TO:



MOST DISSIMILAR TO:



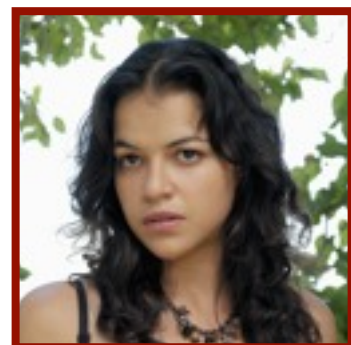
BORIS



RANKING

- DESMOND
- CHARLIE
- SAWYER
- SAYID
- HURLEY
- KATE
- JULIET
- LOCKE
- JACK
- JIN
- CLAIRE
- BEN
- BOONE
- EKO
- MILES
- DANIEL
- SUN
- SHANNON
- LIBBY
- CHARLOTTE
- PAULO
- NIKKI
- WALT
- MICHAEL
- ANA LUCIA

EXTREME



12TH

MOST DEVIANT OVERALL

2

NUM. OF EXTREME RANKINGS

JULIET

0.261 AWAY

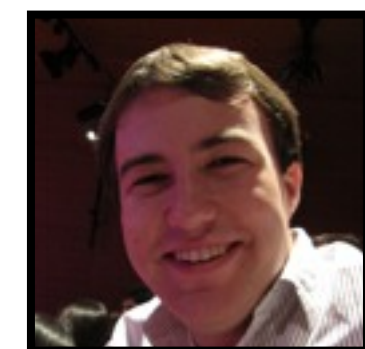
CHARACTER RANKED CLOSEST TO AVERAGE

DANIEL

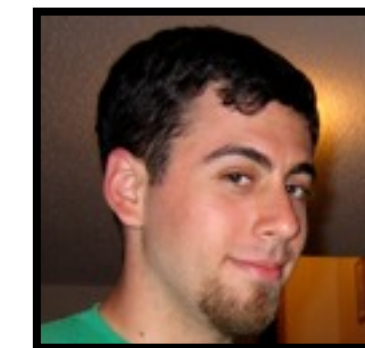
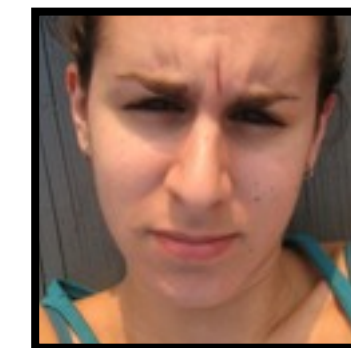
8.174 BELOW AVERAGE

CHARACTER RANKED FARTHEST FROM AVERAGE

MOST SIMILAR TO:



MOST DISSIMILAR TO:



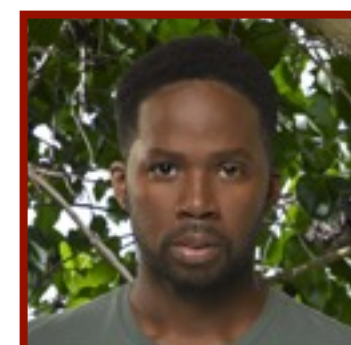
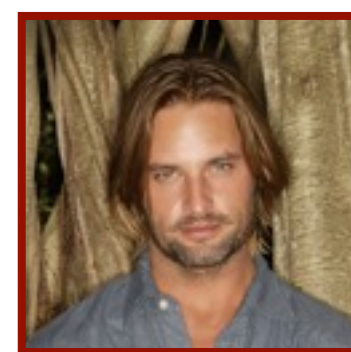
DEREK



RANKING

- BEN
- EKO
- DANIEL
- DESMOND
- JULIET
- ANA LUCIA
- JACK
- LOCKE
- CHARLOTTE
- HURLEY
- CHARLIE
- JIN
- KATE
- LIBBY
- SAYID
- MILES
- SAWYER
- BOONE
- SHANNON
- WALT
- NIKKI
- PAULO
- CLAIRE
- SUN
- MICHAEL

EXTREME



8TH

MOST DEVIANT OVERALL

6

NUM. OF EXTREME RANKINGS

BOONE

0.000 AWAY

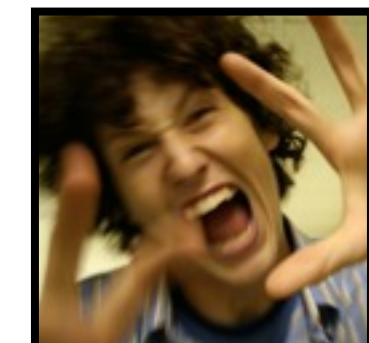
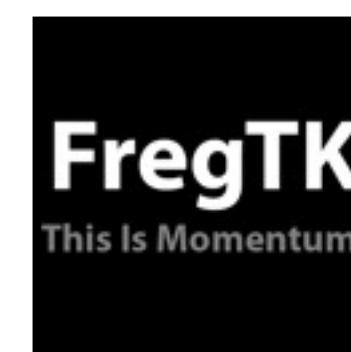
CHARACTER RANKED CLOSEST TO AVERAGE

ANA LUCIA

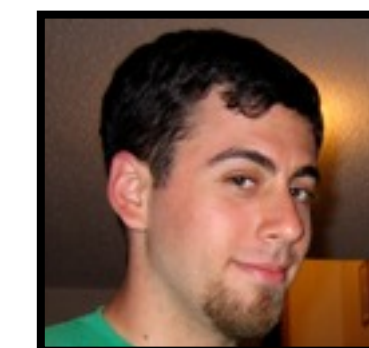
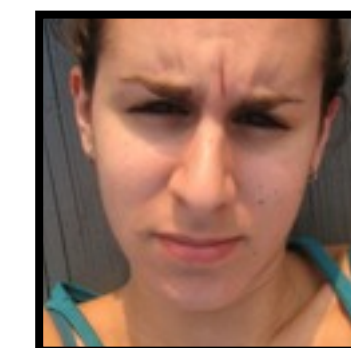
12.304 ABOVE AVERAGE

CHARACTER RANKED FARTHEST FROM AVERAGE

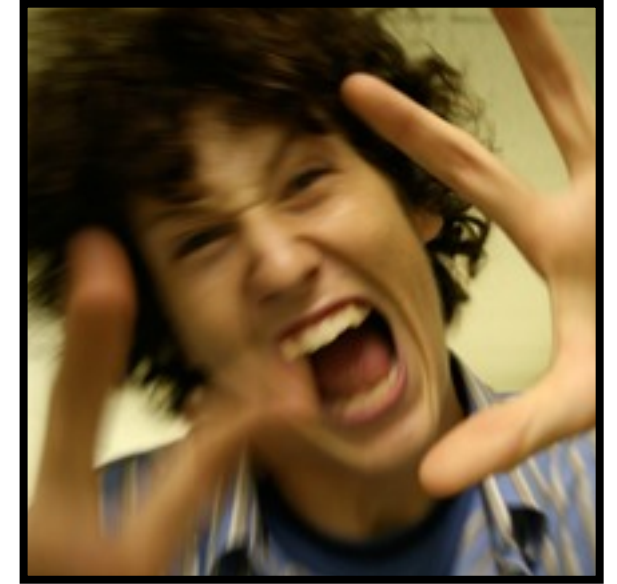
MOST SIMILAR TO:



MOST DISSIMILAR TO:



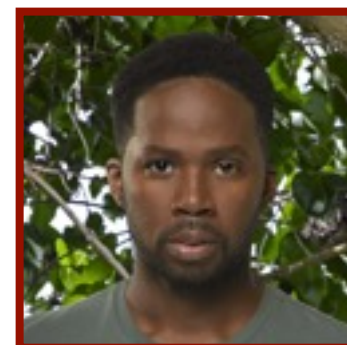
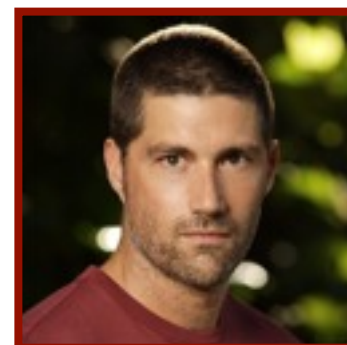
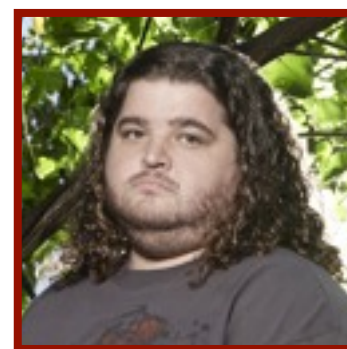
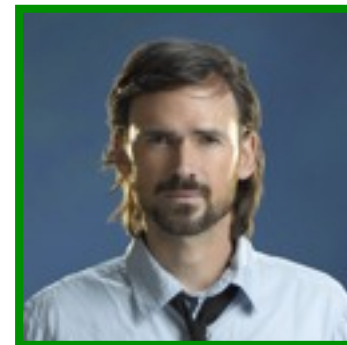
DOUG



RANKING

- DANIEL
- JULIET
- BEN SAWYER
- DESMOND
- CHARLOTTE
- SAYID
- MILES
- JIN
- LOCKE
- BOONE
- HURLEY
- KATE
- EKO
- CHARLIE
- NIKKI
- PAULO
- LIBBY
- WALT
- ANA LUCIA
- JACK
- SHANNON
- SUN
- CLAIRE
- MICHAEL

EXTREME



7TH

MOST DEVIANT OVERALL

6

NUM. OF EXTREME RANKINGS

DESMOND

0.261 AWAY

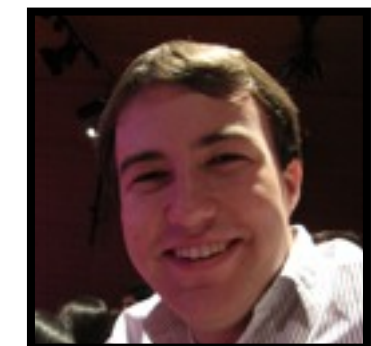
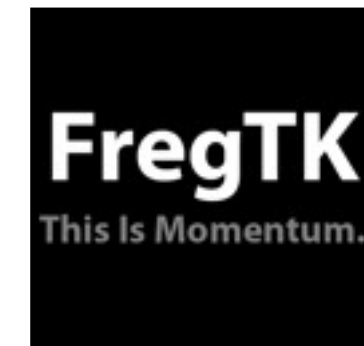
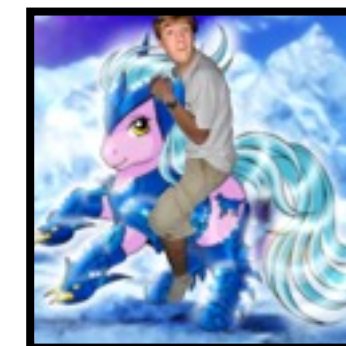
CHARACTER RANKED CLOSEST TO AVERAGE

SUN

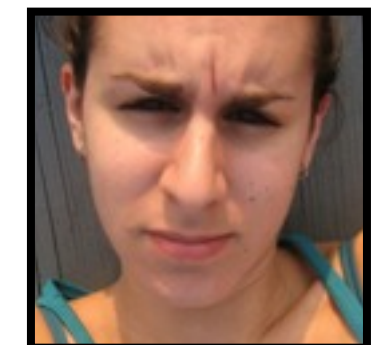
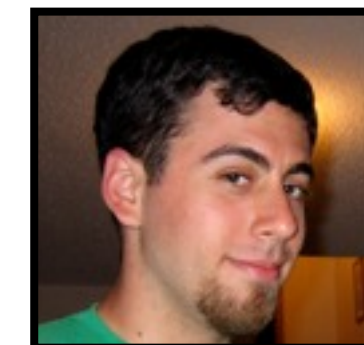
10.435 BELOW AVERAGE

CHARACTER RANKED FARTHEST FROM AVERAGE

MOST SIMILAR TO:



MOST DISSIMILAR TO:



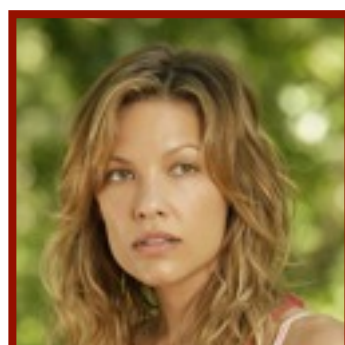
DUSTIN



RANKING

- SAWYER
- BEN
- JIN
- DESMOND
- SUN
- JULIET
- SAYID
- LOCKE
- HURLEY
- JACK
- CHARLIE
- LIBBY
- KATE
- DANIEL
- MILES
- EKO
- WALT
- BOONE
- CHARLOTTE
- MICHAEL
- CLAIRE
- ANA LUCIA
- SHANNON
- NIKKI
- PAULO

EXTREME



20TH

MOST DEVIANT OVERALL

BOONE

0.000 AWAY

CHARACTER RANKED CLOSEST TO AVERAGE

4

NUM. OF EXTREME RANKINGS

JIN

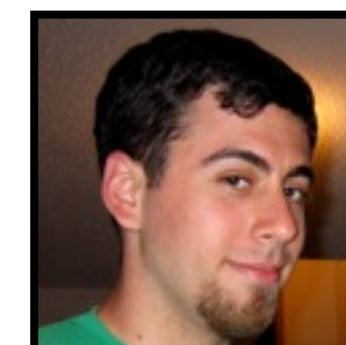
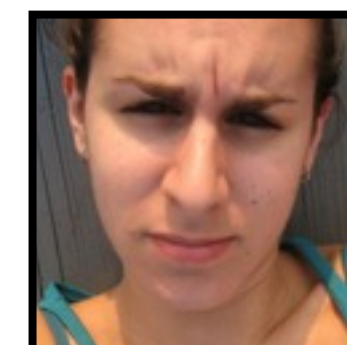
7.957 ABOVE AVERAGE

CHARACTER RANKED FARTHEST FROM AVERAGE

MOST SIMILAR TO:



MOST DISSIMILAR TO:



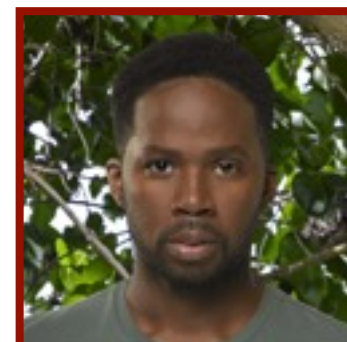
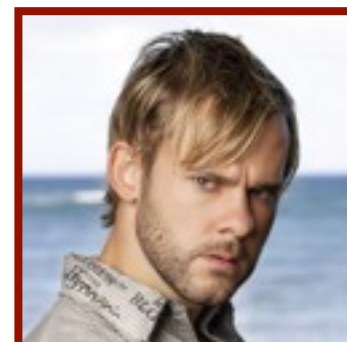
GREG

FregTK
This Is Momentum.

RANKING

- SAYID
- BEN
- DESMOND
- DANIEL
- HURLEY
- LIBBY
- JULIET
- SAWYER
- CHARLOTTE
- MILES
- LOCKE
- JACK
- KATE
- EKO
- SUN
- JIN
- ANA LUCIA
- BOONE
- CHARLIE
- WALT
- SHANNON
- CLAIRE
- NIKKI
- PAULO
- MICHAEL

EXTREME



19TH

MOST DEVIANT OVERALL

3

NUM. OF EXTREME RANKINGS

BOONE

0.000 AWAY

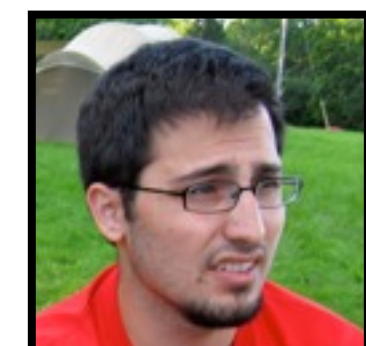
CHARACTER RANKED CLOSEST TO AVERAGE

CHARLIE

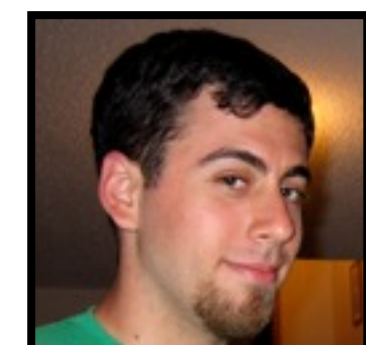
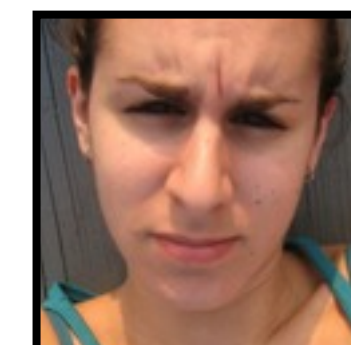
9.087 BELOW AVERAGE

CHARACTER RANKED FARTHEST FROM AVERAGE

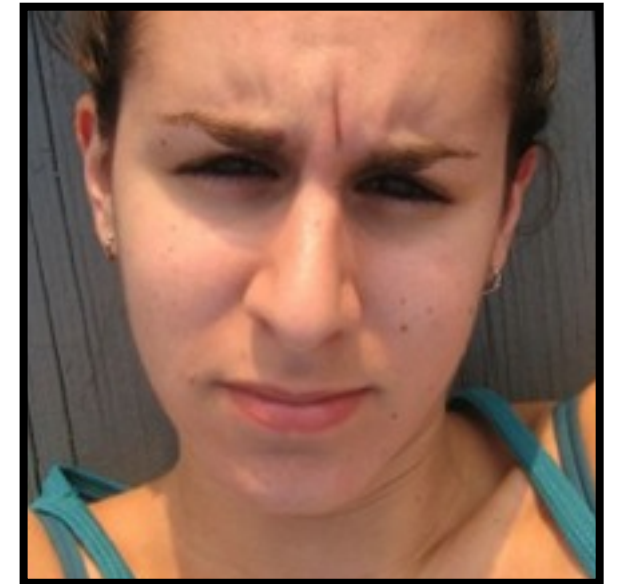
MOST SIMILAR TO:



MOST DISSIMILAR TO:



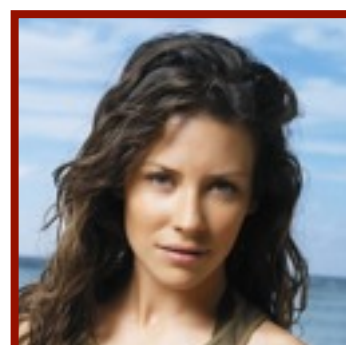
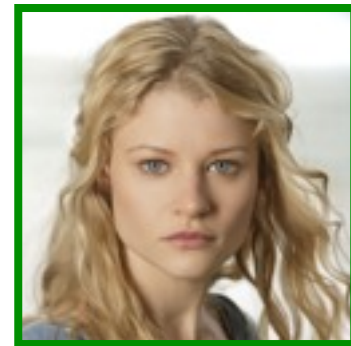
JACOUI



RANKING

- CHARLIE
- NIKKI
- JULIET
- JIN
- HURLEY
- DANIEL
- CLAIRE
- MILES
- SUN
- EKO
- LIBBY
- CHARLOTTE
- PAULO
- SAWYER
- WALT
- DESMOND
- BEN
- BOONE
- MICHAEL
- LOCKE
- JACK
- SAYID
- SHANNON
- ANA LUCIA
- KATE

EXTREME



1ST

MOST DEVIANT OVERALL

5

NUM. OF EXTREME RANKINGS

BOONE

0.000 AWAY

CHARACTER RANKED CLOSEST TO AVERAGE

NIKKI

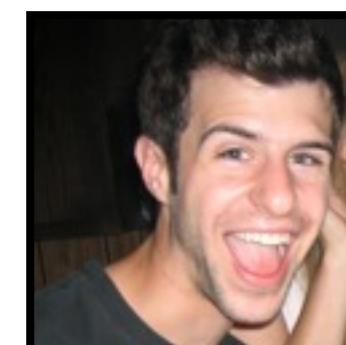
19.261 ABOVE AVERAGE

CHARACTER RANKED FARTHEST FROM AVERAGE

MOST SIMILAR TO:



MOST DISSIMILAR TO:



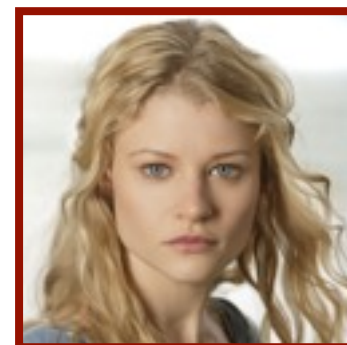
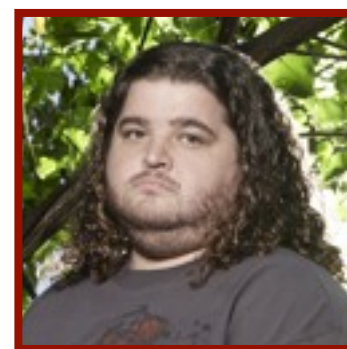
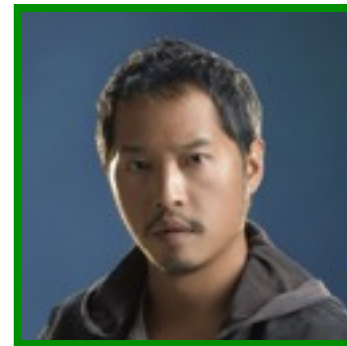
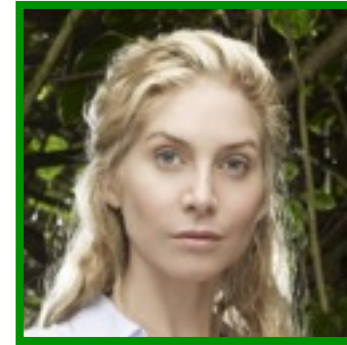
JOSH



RANKING

- JULIET
- SHANNON
- SAWYER
- MILES
- SUN
- BEN
- KATE
- LIBBY
- JIN
- DESMOND
- ANA LUCIA
- HURLEY
- EKO
- CHARLIE
- DANIEL
- JACK
- MICHAEL
- WALT
- CHARLOTTE
- BOONE
- NIKKI
- PAULO
- SAYID
- LOCKE
- CLAIRE

EXTREME



4TH

MOST DEVIANT OVERALL

7

NUM. OF EXTREME RANKINGS

WALT

0.043 AWAY

CHARACTER RANKED CLOSEST TO AVERAGE

SHANNON

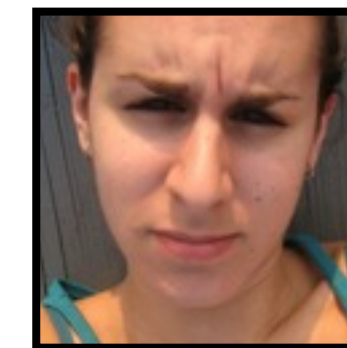
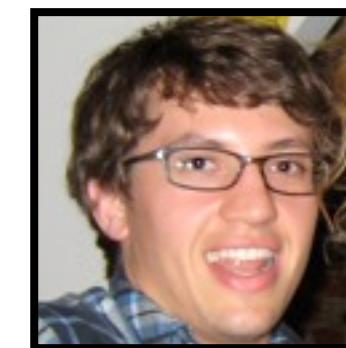
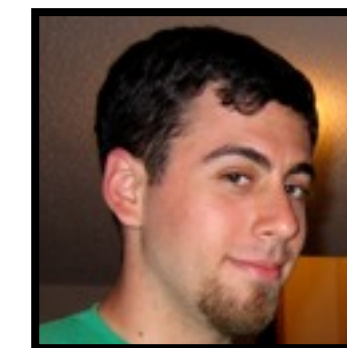
19.261 ABOVE AVERAGE

CHARACTER RANKED FARTHEST FROM AVERAGE

MOST SIMILAR TO:



MOST DISSIMILAR TO:



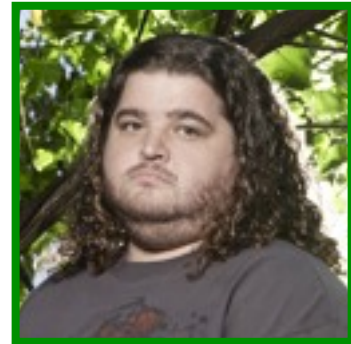
JUSTIN



RANKING

- HURLEY
- SAWYER
- SAYID
- DESMOND
- EKO
- LOCKE
- JIN
- MILES
- CHARLIE
- BEN
- DANIEL
- SUN
- KATE
- JACK
- JULIET
- WALT
- MICHAEL
- CHARLOTTE
- CLAIRE
- NIKKI
- PAULO
- SHANNON
- LIBBY
- ANA LUCIA
- BOONE

EXTREME



13TH

MOST DEVIANT OVERALL

2

NUM. OF EXTREME RANKINGS

SUN

0.565 AWAY

CHARACTER RANKED CLOSEST TO AVERAGE

JULIET

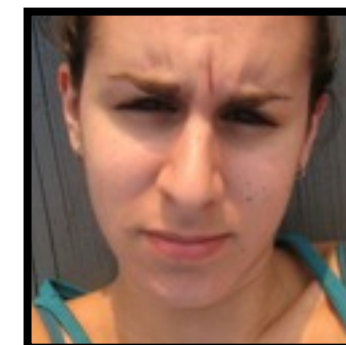
8.261 BELOW AVERAGE

CHARACTER RANKED FARTHEST FROM AVERAGE

MOST SIMILAR TO:



MOST DISSIMILAR TO:



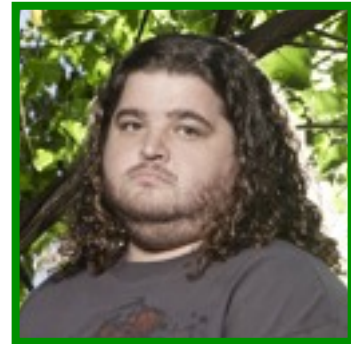
KATE



RANKING

- HURLEY
- DANIEL
- DESMOND
- EKO
- BEN
- SAWYER
- LOCKE
- CHARLIE
- JULIET
- SAYID
- JIN
- LIBBY
- KATE
- MILES
- JACK
- SUN
- WALT
- ANA LUCIA
- CLAIRE
- SHANNON
- CHARLOTTE
- MICHAEL
- NIKKI
- PAULO
- BOONE

EXTREME



23RD

MOST DEVIANT OVERALL

2

NUM. OF EXTREME RANKINGS

JIN

0.043 AWAY

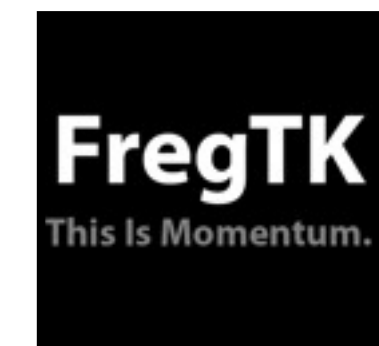
CHARACTER RANKED CLOSEST TO AVERAGE

EKO

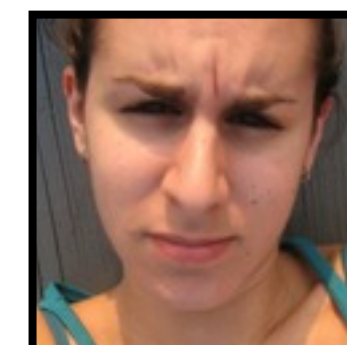
8.826 ABOVE AVERAGE

CHARACTER RANKED FARTHEST FROM AVERAGE

MOST SIMILAR TO:



MOST DISSIMILAR TO:



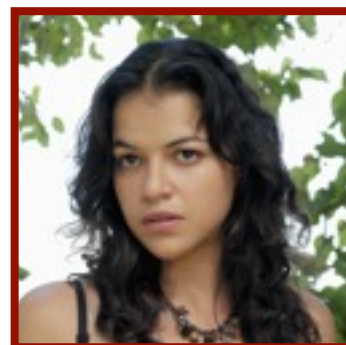
KENDRA



RANKING

- SAYID
- SHANNON
- SAWYER
- JULIET
- SUN
- MILES
- DANIEL
- DESMOND
- CHARLIE
- HURLEY
- JIN
- CHARLOTTE
- BOONE
- BEN
- CLAIRE
- KATE
- MICHAEL
- JACK
- NIKKI
- PAULO
- WALT
- LOCKE
- EKO
- LIBBY
- ANA LUCIA

EXTREME



5TH

MOST DEVIANT OVERALL

5

NUM. OF EXTREME RANKINGS

JIN

0.043 AWAY

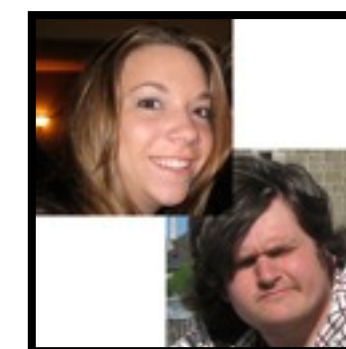
CHARACTER RANKED CLOSEST TO AVERAGE

SHANNON

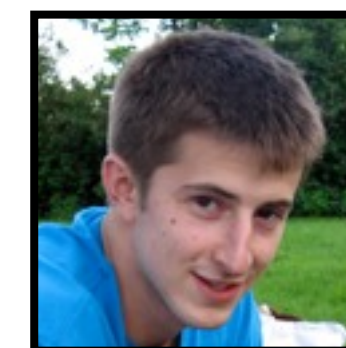
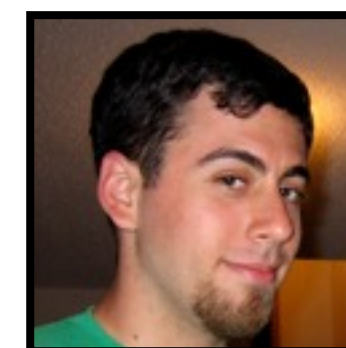
16.870 ABOVE AVERAGE

CHARACTER RANKED FARTHEST FROM AVERAGE

MOST SIMILAR TO:



MOST DISSIMILAR TO:



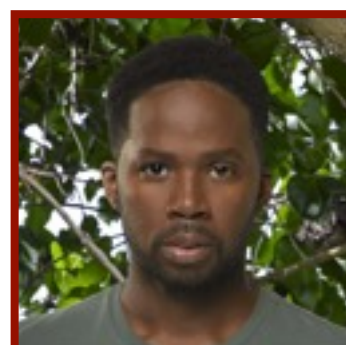
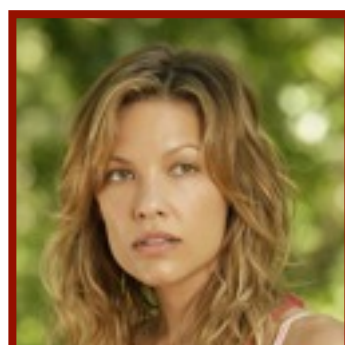
LINDSEY



RANKING

- DESMOND
- SAWYER
- SAYID
- DANIEL
- JULIET
- KATE
- JACK
- HURLEY
- BEN
- LOCKE
- CHARLIE
- SUN
- JIN
- WALT
- MILES
- EKO
- SHANNON
- BOONE
- LIBBY
- CLAIRE
- CHARLOTTE
- ANA LUCIA
- PAULO
- NIKKI
- MICHAEL

EXTREME



22ND

MOST DEVIANT OVERALL

3

NUM. OF EXTREME RANKINGS

BOONE

0.000 AWAY

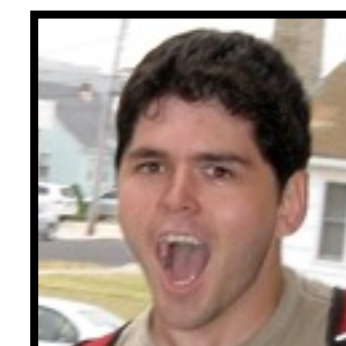
CHARACTER RANKED CLOSEST TO AVERAGE

KATE

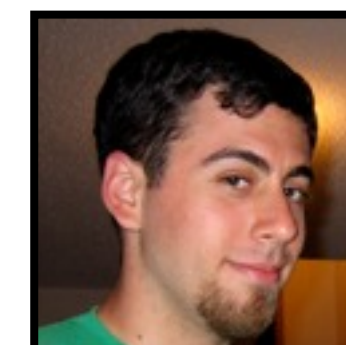
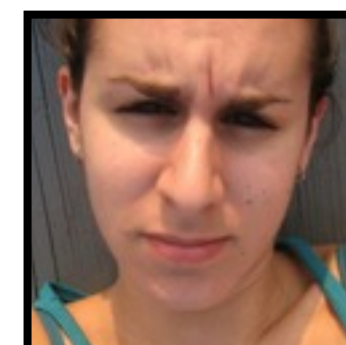
5.348 ABOVE AVERAGE

CHARACTER RANKED FARTHEST FROM AVERAGE

MOST SIMILAR TO:



MOST DISSIMILAR TO:



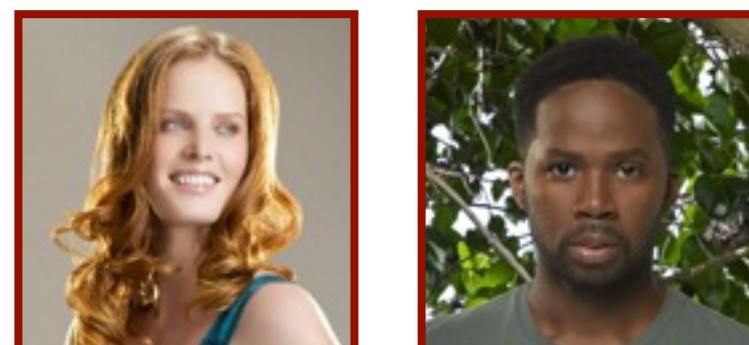
MARC



RANKING

- KATE
- BEN
- SUN
- SAYID
- HURLEY
- LOCKE
- SHANNON
- ANA LUCIA
- SAWYER
- WALT
- JACK
- JULIET
- DANIEL
- LIBBY
- EKO
- BOONE
- CHARLIE
- JIN
- CLAIRE
- MILES
- DESMOND
- NIKKI
- CHARLOTTE
- PAULO
- MICHAEL

EXTREME



3RD

MOST DEVIANT OVERALL

5

NUM. OF EXTREME RANKINGS

NIKKI

0.739 AWAY

CHARACTER RANKED CLOSEST TO AVERAGE

DESMOND

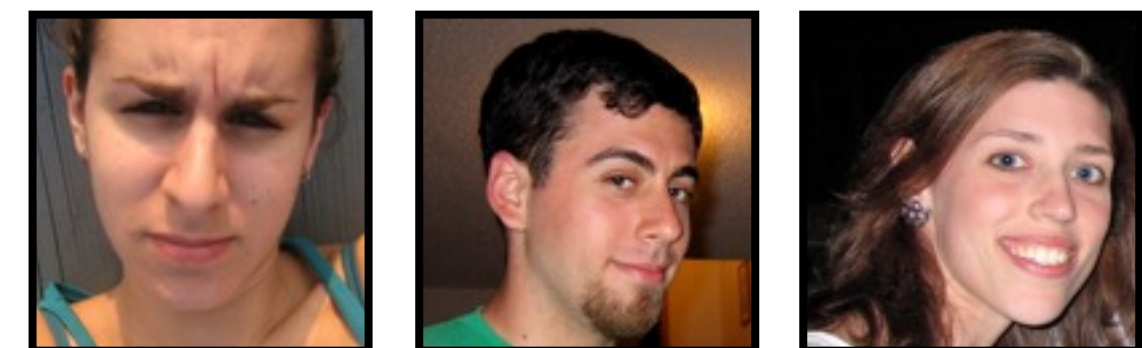
16.261 BELOW AVERAGE

CHARACTER RANKED FARTHEST FROM AVERAGE

MOST SIMILAR TO:



MOST DISSIMILAR TO:



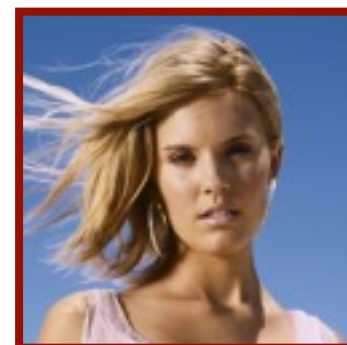
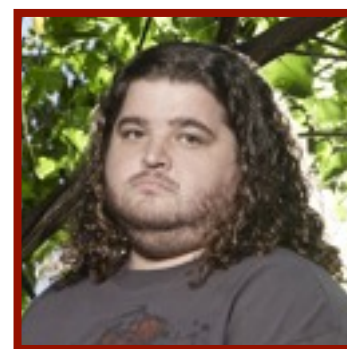
MARIAN



RANKING

- BEN
- CHARLIE
- DESMOND
- JULIET
- JACK
- ANA LUCIA
- KATE
- LOCKE
- SAYID
- SAWYER
- DANIEL
- HURLEY
- SUN
- JIN
- MILES
- CLAIRE
- MICHAEL
- LIBBY
- EKO
- NIKKI
- BOONE
- CHARLOTTE
- PAULO
- WALT
- SHANNON

EXTREME



9TH

MOST DEVIANT OVERALL

5

NUM. OF EXTREME RANKINGS

SUN

0.435 AWAY

CHARACTER RANKED CLOSEST TO AVERAGE

ANA LUCIA

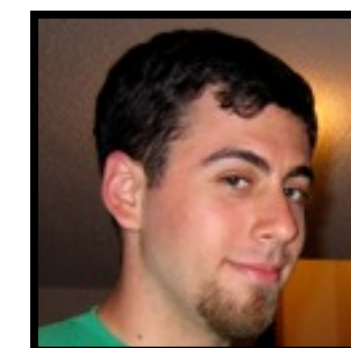
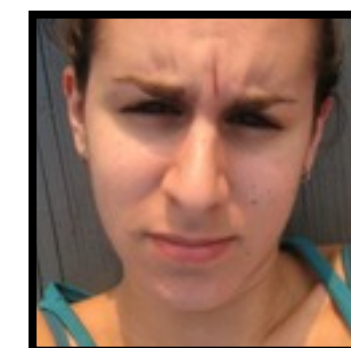
12.304 ABOVE AVERAGE

CHARACTER RANKED FARTHEST FROM AVERAGE

MOST SIMILAR TO:



MOST DISSIMILAR TO:



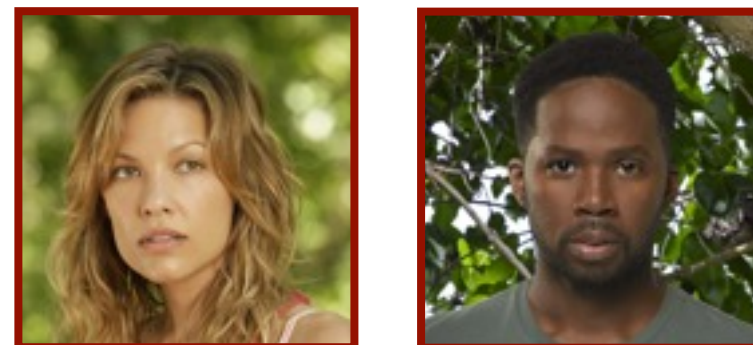
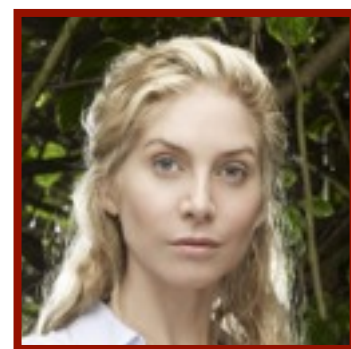
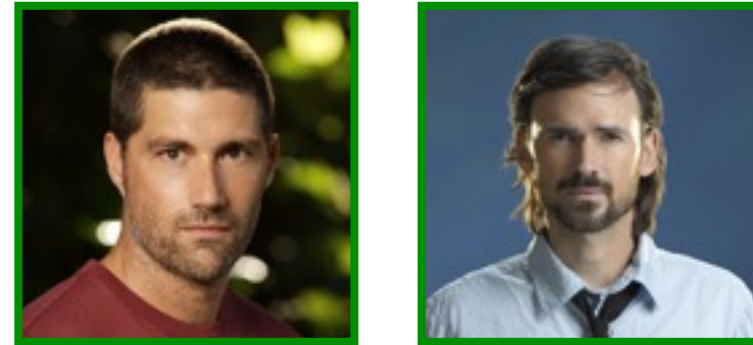
MATT



RANKING

- DANIEL
- DESMOND
- SAYID
- JACK
- LOCKE
- MILES
- CHARLIE
- HURLEY
- CHARLOTTE
- SAWYER
- KATE
- BEN
- LIBBY
- CLAIRE
- EKO
- JIN
- JULIET
- WALT
- SUN
- ANA LUCIA
- BOONE
- SHANNON
- PAULO
- NIKKI
- MICHAEL

EXTREME



10TH

MOST DEVIANT OVERALL

5

NUM. OF EXTREME RANKINGS

WALT

0.043 AWAY

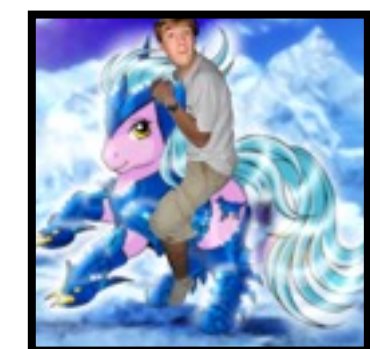
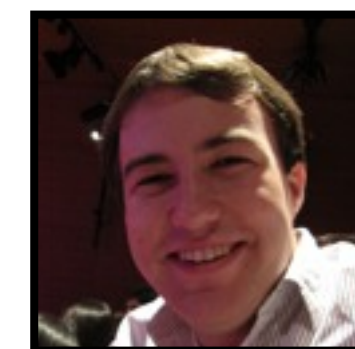
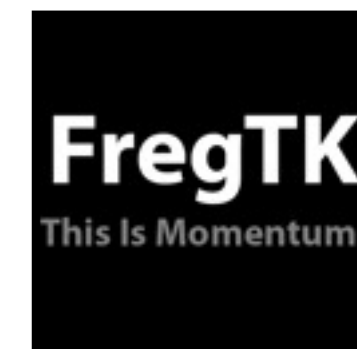
CHARACTER RANKED CLOSEST TO AVERAGE

JULIET

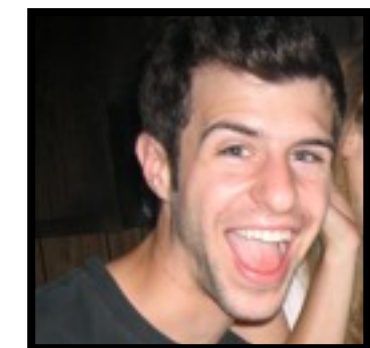
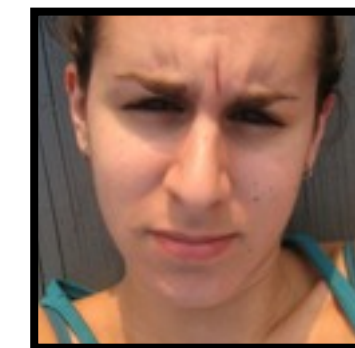
10.261 BELOW AVERAGE

CHARACTER RANKED FARTHEST FROM AVERAGE

MOST SIMILAR TO:



MOST DISSIMILAR TO:



MIKE



RANKING

- SAYID
- DESMOND
- JIN
- JULIET
- HURLEY
- MILES
- LOCKE
- DANIEL
- SAWYER
- EKO
- BEN
- JACK
- SUN
- BOONE
- CHARLIE
- LIBBY
- CHARLOTTE
- ANA LUCIA
- KATE
- NIKKI
- PAULO
- CLAIRE
- WALT
- MICHAEL
- SHANNON

EXTREME



18TH

MOST DEVIANT OVERALL

3

NUM. OF EXTREME RANKINGS

DANIEL

0.174 AWAY

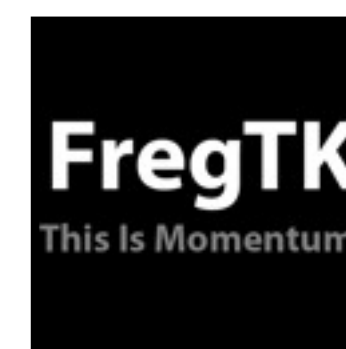
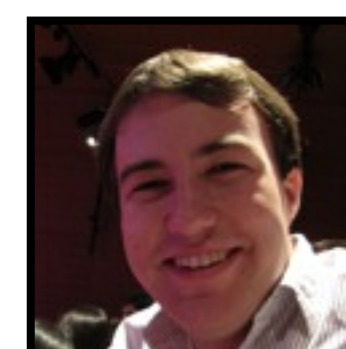
CHARACTER RANKED CLOSEST TO AVERAGE

JIN

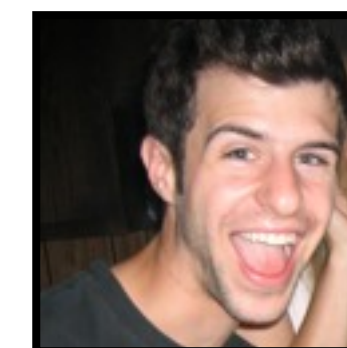
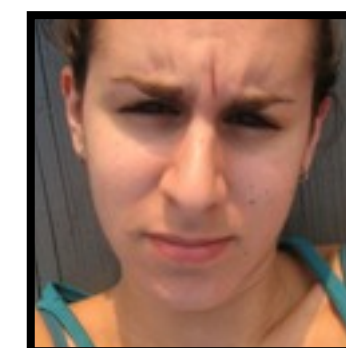
7.957 ABOVE AVERAGE

CHARACTER RANKED FARTHEST FROM AVERAGE

MOST SIMILAR TO:



MOST DISSIMILAR TO:



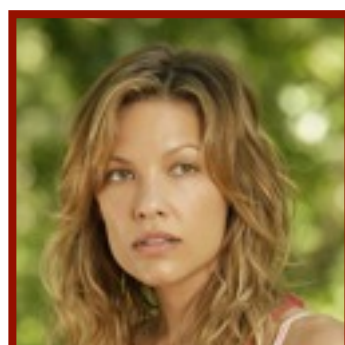
MIRKIN



RANKING

- DESMOND
- DANIEL
- JULIET
- KATE
- JACK
- HURLEY
- JIN
- SALUYER
- SAYID
- SUN
- LOCKE
- EKO
- CHARLIE
- MILES
- BEN
- CLAIRE
- ANA LUCIA
- WALT
- MICHAEL
- LIBBY
- BOONE
- SHANNON
- CHARLOTTE
- NIKKI
- PAULO

EXTREME



T 15 TH

MOST DEVIANT OVERALL

4

NUM. OF EXTREME RANKINGS

WALT

0.043 AWAY

CHARACTER RANKED CLOSEST TO AVERAGE

KATE

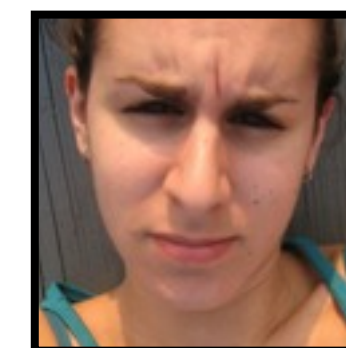
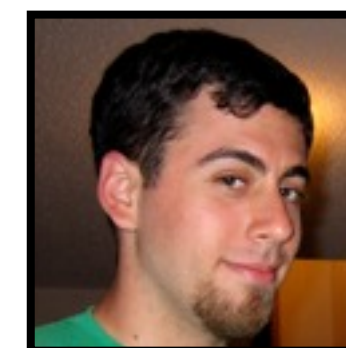
7.348 ABOVE AVERAGE

CHARACTER RANKED FARTHEST FROM AVERAGE

MOST SIMILAR TO:



MOST DISSIMILAR TO:



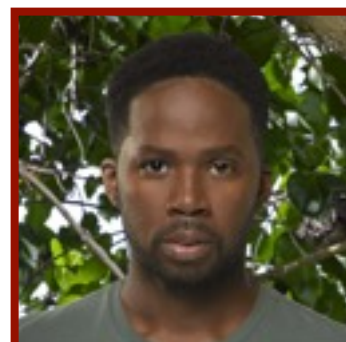
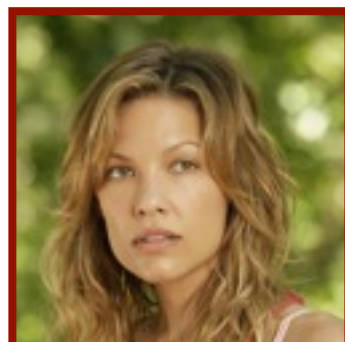
PONY



RANKING

- DESMOND
- DANIEL
- JULIET
- SAWYER
- MILES
- BEN
- SAYID
- SUN
- LOCKE
- HURLEY
- CLAIRE
- CHARLIE
- JIN
- CHARLOTTE
- LIBBY
- EKO
- WALT
- ANA LUCIA
- KATE
- JACK
- PAULO
- BOONE
- SHANNON
- NIKKI
- MICHAEL

EXTREME



14TH

MOST DEVIANT OVERALL

3

NUM. OF EXTREME RANKINGS

LIBBY

0.174 AWAY

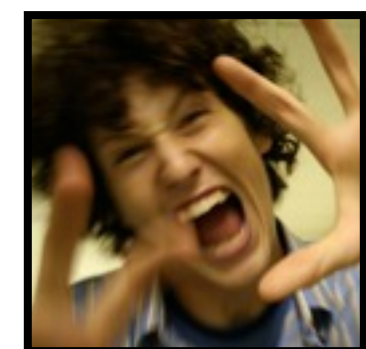
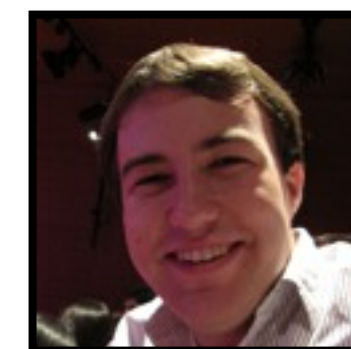
CHARACTER RANKED CLOSEST TO AVERAGE

JACK

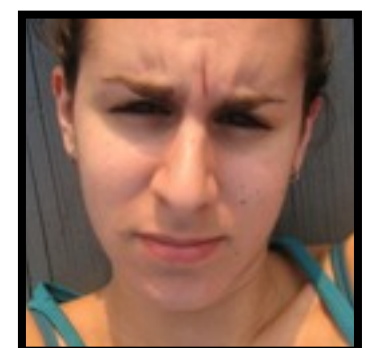
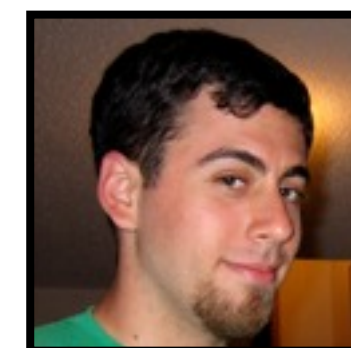
8.217 BELOW AVERAGE

CHARACTER RANKED FARTHEST FROM AVERAGE

MOST SIMILAR TO:



MOST DISSIMILAR TO:



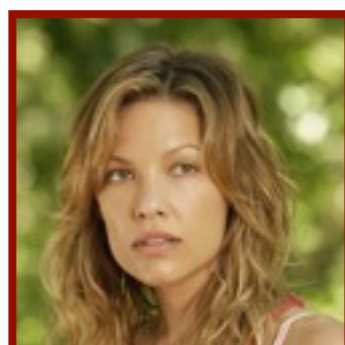
ROB



RANKING

- DESMOND
- SAWYER
- BEN
- JULIET
- SAYID
- MILES
- HURLEY
- CHARLIE
- JACK
- DANIEL
- LOCKE
- LIBBY
- BOONE
- SUN
- KATE
- EKO
- JIN
- CHARLOTTE
- CLAIRE
- ANA LUCIA
- WALT
- SHANNON
- MICHAEL
- NIKKI
- PAULO

EXTREME



21ST

MOST DEVIANT OVERALL

3

NUM. OF EXTREME RANKINGS

HURLEY

0.130 AWAY

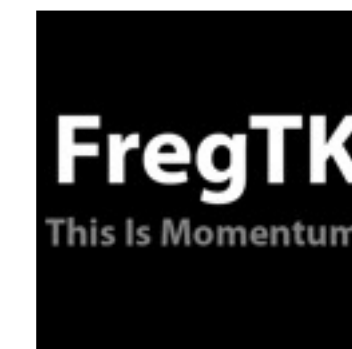
CHARACTER RANKED CLOSEST TO AVERAGE

JIN

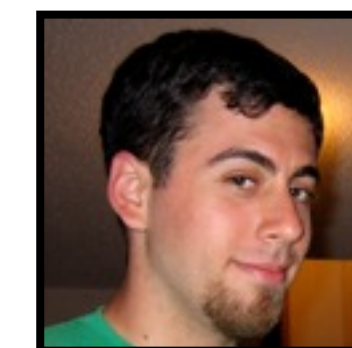
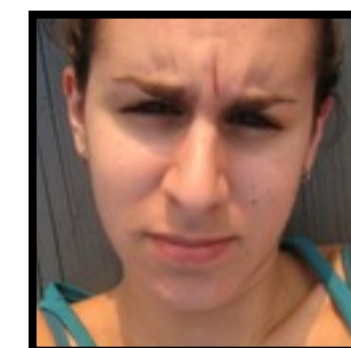
6.043 BELOW AVERAGE

CHARACTER RANKED FARTHEST FROM AVERAGE

MOST SIMILAR TO:



MOST DISSIMILAR TO:



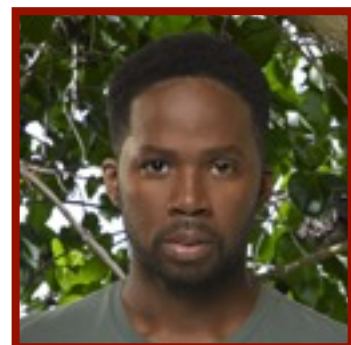
SAM



RANKING

- LOCKE
- BEN
- HURLEY
- SAWYER
- JIN
- DESMOND
- KATE
- SAYID
- MILES
- LIBBY
- DANIEL
- JACK
- JULIET
- SUN
- CHARLIE
- SHANNON
- EKO
- WALT
- BOONE
- ANA LUCIA
- CHARLOTTE
- CLAIRE
- NIKKI
- PAULO
- MICHAEL

EXTREME



T 15 TH

MOST DEVIANT OVERALL

2

NUM. OF EXTREME RANKINGS

WALT

0.043 AWAY

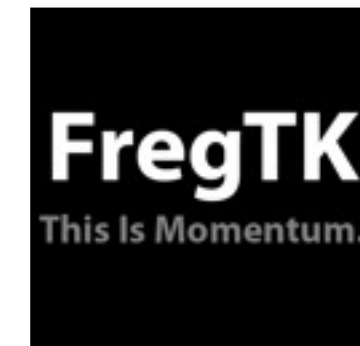
CHARACTER RANKED CLOSEST TO AVERAGE

LOCKE

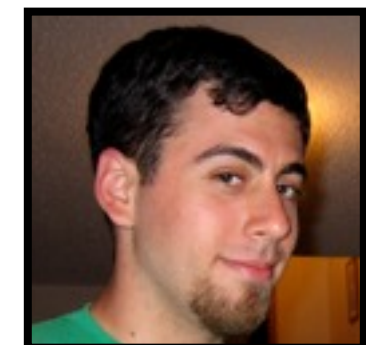
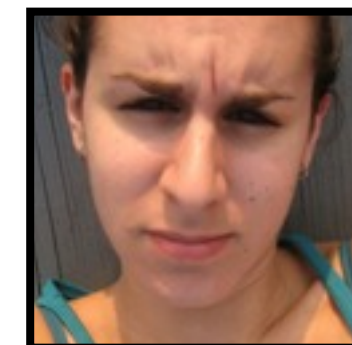
8.478 ABOVE AVERAGE

CHARACTER RANKED FARTHEST FROM AVERAGE

MOST SIMILAR TO:



MOST DISSIMILAR TO:



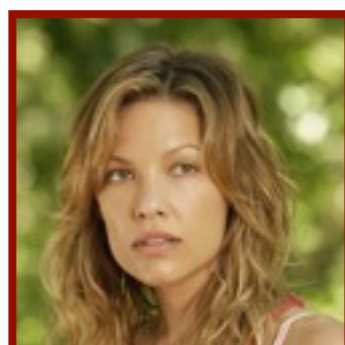
TELLER



RANKING

- SAWYER
- BEN
- LOCKE
- DESMOND
- HURLEY
- EKO
- KATE
- JIN
- SUN
- JULIET
- DANIEL
- CLAIRE
- CHARLOTTE
- SHANNON
- CHARLIE
- SAYID
- MILES
- JACK
- WALT
- MICHAEL
- LIBBY
- ANA LUCIA
- BOONE
- NIKKI
- PAULO

EXTREME



6TH

MOST DEVIANT OVERALL

3

NUM. OF EXTREME RANKINGS

DESMOND

0.739 AWAY

CHARACTER RANKED CLOSEST TO AVERAGE

SAYID

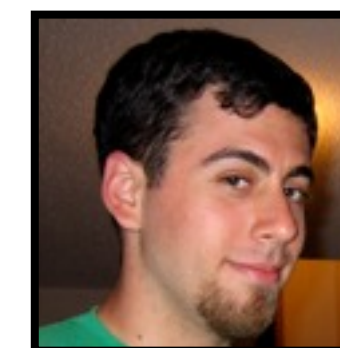
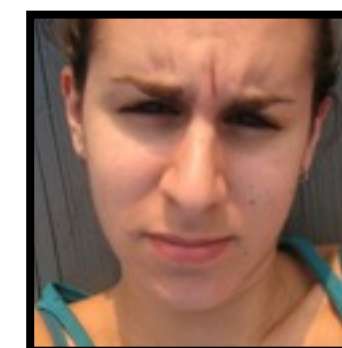
7.652 BELOW AVERAGE

CHARACTER RANKED FARTHEST FROM AVERAGE

MOST SIMILAR TO:



MOST DISSIMILAR TO:



METHODOLOGY

OVERALL CHARACTER RANK

OVERALL CHARACTER RANK IS CALCULATED BY ADDING TOGETHER THE RANK EACH RESPONDENT GAVE TO ANY ONE CHARACTER, DIVIDING BY THE TOTAL NUMBER OF RESPONDENTS (23), AND RANKING THE RESULTS FROM LEAST TO GREATEST. IN THE EXAMPLE WHERE RESPONDENTS A, B, & C RANK CHARACTERS X, Y, & Z:

	X	Y	Z
	2.66	1.33	2
A	2	1	3
B	3	2	1
C	3	1	2

Y WOULD HAVE AN AVERAGE RANK OF 1.33, Z WOULD HAVE AN AVERAGE RANK OF 2, AND X WOULD HAVE AN AVERAGE RANK OF 2.66. THIS WOULD MEAN THAT Y WOULD BE RANKED 1ST, Z WOULD BE RANKED 2ND, AND X WOULD BE RANKED 3RD.

CHARACTER CONTROVERSIAL RATING

THE CONTROVERSIAL RATING OF A CHARACTER IS DETERMINED BY ADDING THE ABSOLUTE DIFFERENCE BETWEEN EACH RESPONDENT'S RANK FOR A PARTICULAR CHARACTER, AND THAT CHARACTER'S AVERAGE RANK, THEN DIVIDING BY THE TOTAL NUMBER OF RESPONDENTS (23). CONTINUING FROM THE PREVIOUS EXAMPLE, WITH CHARACTERS X, Y, & Z:

	X	Y	Z
	2.66	1.33	2
A	2	1	3
B	3	2	1
C	3	1	2

	X	Y	Z
	2.66	1.33	2
A	0.66	0.33	1
B	0.33	1	1
C	0.33	0.33	0
	1.33	1.66	2
	0.443	0.553	0.66

X WOULD HAVE THE LOWEST CONTROVERSIAL RATING, SINCE 1.33 DIVIDED BY 3 IS 0.443, FOLLOWED BY Y WITH A CONTROVERSIAL RATING OF 0.553, WITH Z BEING THE MOST CONTROVERSIAL CHARACTER, WITH A RATING OF 0.66

DEVIANCE RATING

THE DEVIANCE RATING IS CALCULATED BY ADDING THE ABSOLUTE DIFFERENCE BETWEEN A RESPONDENT'S RANK OF ANY GIVEN CHARACTER AND THAT CHARACTER'S AVERAGE RANK. CONTINUING THIS EXAMPLE:

	X	Y	Z		
	2.66	1.33	2		
A	0.66	0.33	1	2.00	0.66
B	0.33	1	1	2.33	0.78
C	0.33	0.33	0	0.66	0.22

RESPONDENT C WOULD HAVE THE LOWEST DEVIANCE RATING, SINCE ON AVERAGE THAT RESPONDENT IS ONLY 0.22 AWAY FROM THE AVERAGE RANK OF A CHARACTER. MEANWHILE, RESPONDENT A WOULD BE 2ND MOST DEVIANT, AND B WOULD BE MOST DEVIANT.

MOST SIMILAR/DISSIMILAR TO

THE SIMILARITY COMPARISON IS CALCULATED BY FINDING THE AVERAGE ABSOLUTE DIFFERENCE BETWEEN ANY ONE RESPONDENT'S RANKING AND ALL OTHER RESPONDENTS' RANKINGS, DIVIDING BY THE TOTAL NUMBER OF CHARACTERS (25), AND RANKING THE RESULTS FROM LEAST TO GREATEST. THOSE WITH THE SMALLEST DIFFERENCE ARE MOST SIMILAR TO THE RESPONDENT; THOSE WITH THE LARGEST DIFFERENCE ARE MOST DISSIMILAR TO THE RESPONDENT.

TIERS

TIERS ARE DETERMINED BY IDENTIFYING THE 4 LARGEST GAPS BETWEEN RANKS, WHICH IS WHY SOME TIERS HAVE 1 CHARACTERS/RESPONDENT, AND OTHERS HAVE MANY MORE.